

CONTACT US

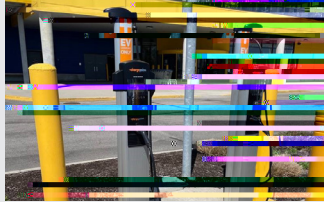
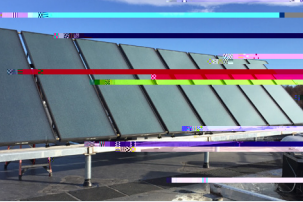


[northwindgrp.com](http://northwindgrp.com)

(208) 528-8718

[bd@northwindgrp.com](mailto:bd@northwindgrp.com)

Solar Panels  
Electric Vehicle Charging  
Stations (EVCS)  
Solar Panel Assessments  
EVCS Design for Parking Decks  
and Office Buildings  
Environmental Safety, Health, &  
Quality



**Electric Vehicle Charging Stations (EVCS) | Department of Energy (DOE) | Piketon, OH**

*9j U'i UhY 'YI ]gh]b[ ' ]bZFUghfi Wki fY 'Zcf'h\ Y'a cgh'Yz] WjYbh'UbX 'Wc:gh!  
YZZYWh]j Y'g]hY 'ja d`Ya YbhUh]cb `hc `a YYh'h\ Y'gd YW]l Wg]hY 'XYa UbXg*

**Goose Creek Correctional Center—Solar Water Heating Upgrades | State of Alaska Department of Corrections | Wasilla, A K**

**CONTACT US**



[northwindgrp.com](http://northwindgrp.com)



(208) 528-8718

[bd@northwindgrp.com](mailto:bd@northwindgrp.com)

07/01/2023